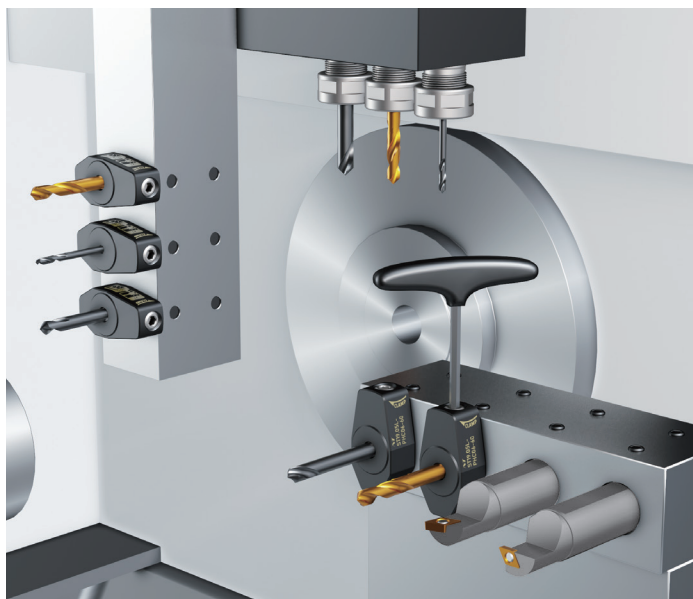




CNC Torno Automático

Hydro Chuck ST•L-PHC

Hydro Chuck for CNC automatic lathe



¡Cambio de herramienta eficiente en espacios de máquina reducidos!

Efficient tool changing in tight machine spaces!

Video / Movie



Diámetro Interno (I.D.)

ø3.0~ø12.0 mm

Medida del zanco / ShankSize

ST16L, ST19.05L, ST20L
ST22L, ST25L, ST25.4L

La imagen que se muestra es solo una imagen. Cuando utilice el producto, asegure el mandril en el accesorio antes de sujetar una herramienta de corte.
Picture shown is image only. When using the product, secure the chuck on the fixture before clamping a cutting tool.

Ejemplo de mejora: ¡El tiempo de configuración se ha reducido en un 80%! *Desde el cambio de herramienta hasta el centrado.
Improvement example: The setup time has been reduced by 80%! *From tool change to centering.

Antes / Before

Portabroca de Boquilla
Collet Holder

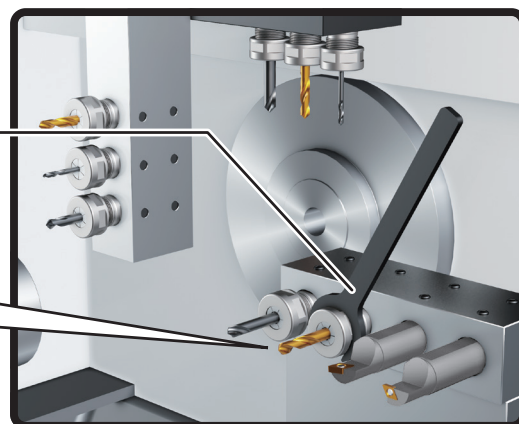
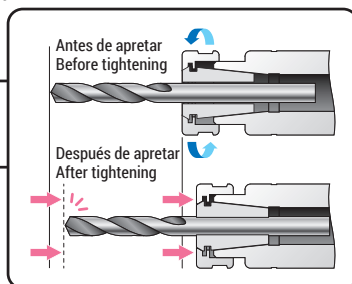
Tiempo de colocación
Set-up time

8 min 43 seg

✗ El cambio de herramienta es difícil en espacios reducidos
Tool change is difficult in tight spaces

✗ Preajuste de herramienta con compensación de altura
Tool pre-set with height offset

✗ La precisión varía entre los cambios de herramienta repetidos
Accuracy varies between repeated tool changes



Después / After

Portabroca Hidráulico
Hydro Chuck

Tiempo de colocación
Set-up time

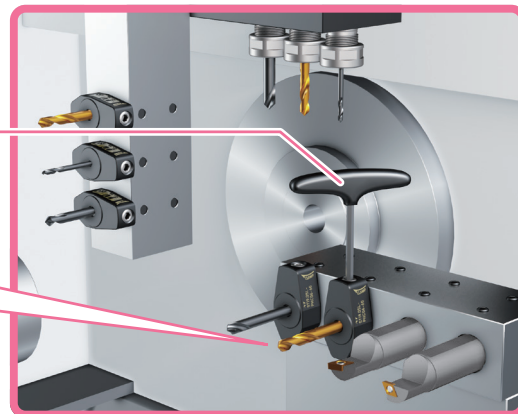
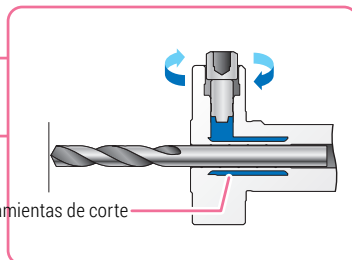
1 min 38 seg

✓ Fácil sujeción con una sola llave
Easy chucking with a single wrench

✓ Preajuste de herramienta sin compensación de altura
Tool pre-set without height offset

✓ Buena repetibilidad (1 µm)
Good repeatability (1µm)

✓ El efecto antivibración prolonga la vida útil de las herramientas de corte
Anti-vibration effect provides longer tool life



NT TOOL DE MEXICO S.A. DE C.V. www.nttool.com.mx



En caso de tener problemas con el procesamiento no dude en contactarnos
Teléfono: +52 (477) 194-45-85 e-mail: sales@nttool.com.mx

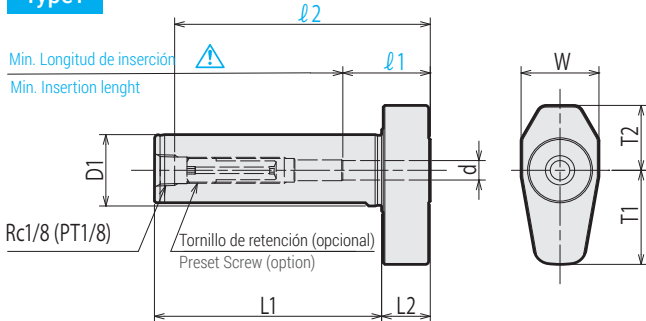


ST·L-PHC

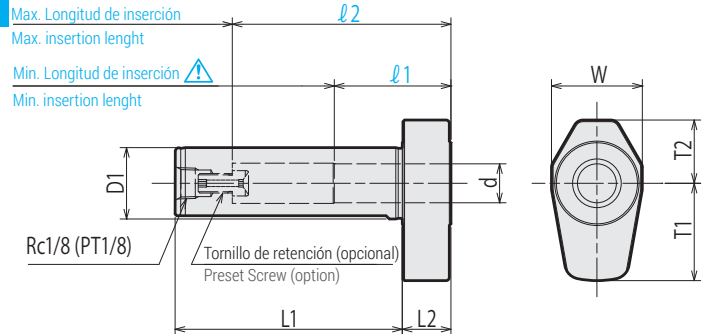
CNC Torno Automático
Hydro Chuck for CNC automatic lathe

¡Cambio de herramienta eficiente en espacios de máquina reducidos!
Efficient tool changing in tight machine spaces!

Tipo 1 Type 1



Tipo 2 Type 2



⚠ Precaución: Respete estrictamente la longitud mínima de inserción. ⚠ Caution : Strictly keep the min insertion length.

| Código Code | Modelo Model | Tipo Type | D1 | L1 | L2 | W | T1 | T2 | ℓ1 | ℓ2 | Llave Allen (Opcional) Wrench (Option) |
|---------------|---------------------|-----------|-------|----|----|----|------|------|----|----|--|
| 0470 01603050 | ST16L -PHC03 -50 | 1 3 | 16 | 50 | 15 | 22 | 23 | 17.5 | 16 | 58 | L-4T |
| 0470 01604050 | -PHC04 -50 | 1 4 | 16 | 50 | 15 | 22 | 23 | 17.5 | 19 | 58 | |
| 0470 01606050 | -PHC06 -50 | 1 6 | 16 | 50 | 15 | 22 | 24.5 | 18.5 | 27 | 58 | |
| 0470 01608050 | -PHC08 -50 | 2 8 | 16 | 50 | 15 | 24 | 25.5 | 19.5 | 27 | 47 | |
| 0470 12403060 | ST19.05L -PHC03 -60 | 1 3 | 19.05 | 60 | 15 | 22 | 23 | 17.5 | 16 | 68 | L-4T |
| 0470 12404060 | -PHC04 -60 | 1 4 | 19.05 | 60 | 15 | 22 | 23 | 17.5 | 19 | 68 | |
| 0470 12406060 | -PHC06 -60 | 1 6 | 19.05 | 60 | 15 | 22 | 24.5 | 18.5 | 27 | 68 | |
| 0470 12408060 | -PHC08 -60 | 2 8 | 19.05 | 60 | 15 | 24 | 25.5 | 19.5 | 27 | 57 | |
| 0470 12410060 | -PHC10 -60 | 2 10 | 19.05 | 60 | 15 | 26 | 26.5 | 20.5 | 33 | 60 | L-4T |
| 0470 02003070 | ST20L -PHC03 -70 | 1 3 | 20 | 70 | 15 | 22 | 23 | 17.5 | 16 | 78 | |
| 0470 02004070 | -PHC04 -70 | 1 4 | 20 | 70 | 15 | 22 | 23 | 17.5 | 19 | 78 | |
| 0470 02006070 | -PHC06 -70 | 1 6 | 20 | 70 | 15 | 22 | 24.5 | 18.5 | 27 | 78 | |
| 0470 02008070 | -PHC08 -70 | 2 8 | 20 | 70 | 15 | 24 | 25.5 | 19.5 | 27 | 64 | L-4T |
| 0470 02010070 | -PHC10 -70 | 2 10 | 20 | 70 | 15 | 26 | 26.5 | 20.5 | 33 | 67 | |
| 0470 02203070 | ST22L -PHC03 -70 | 1 3 | 22 | 70 | 15 | 24 | 23 | 17.5 | 16 | 78 | |
| 0470 02204070 | -PHC04 -70 | 1 4 | 22 | 70 | 15 | 24 | 23 | 17.5 | 19 | 78 | |
| 0470 02206070 | -PHC06 -70 | 1 6 | 22 | 70 | 15 | 24 | 24.5 | 18.5 | 27 | 78 | L-4T |
| 0470 02208070 | -PHC08 -70 | 2 8 | 22 | 70 | 15 | 24 | 25.5 | 19.5 | 27 | 64 | |
| 0470 02210070 | -PHC10 -70 | 2 10 | 22 | 70 | 15 | 26 | 26.5 | 20.5 | 33 | 67 | |
| 0470 02212070 | -PHC12 -70 | 2 12 | 22 | 70 | 15 | 28 | 29 | 21.5 | 36 | 67 | |
| 0470 02503070 | ST25L -PHC03 -70 | 1 3 | 25 | 70 | 15 | 28 | 23 | 17.5 | 16 | 78 | L-4T |
| 0470 02504070 | -PHC04 -70 | 1 4 | 25 | 70 | 15 | 28 | 23 | 17.5 | 19 | 78 | |
| 0470 02505070 | -PHC06 -70 | 1 6 | 25 | 70 | 15 | 28 | 24.5 | 18.5 | 27 | 78 | |
| 0470 02506070 | -PHC08 -70 | 2 8 | 25 | 70 | 15 | 28 | 25.5 | 19.5 | 27 | 64 | |
| 0470 02510070 | -PHC10 -70 | 2 10 | 25 | 70 | 15 | 28 | 26.5 | 20.5 | 33 | 67 | L-4T |
| 0470 02512070 | -PHC12 -70 | 2 12 | 25 | 70 | 15 | 28 | 29 | 21.5 | 36 | 67 | |
| 0470 13203070 | ST25.4L -PHC03 -70 | 1 3 | 25.4 | 70 | 15 | 28 | 23 | 17.5 | 16 | 78 | |
| 0470 13204070 | -PHC04 -70 | 1 4 | 25.4 | 70 | 15 | 28 | 23 | 17.5 | 19 | 78 | |
| 0470 13206070 | -PHC06 -70 | 1 6 | 25.4 | 70 | 15 | 28 | 24.5 | 18.5 | 27 | 78 | L-4T |
| 0470 13208070 | -PHC08 -70 | 2 8 | 25.4 | 70 | 15 | 28 | 25.5 | 19.5 | 27 | 64 | |
| 0470 13210070 | -PHC10 -70 | 2 10 | 25.4 | 70 | 15 | 28 | 26.5 | 20.5 | 33 | 67 | |
| 0470 13212070 | -PHC12 -70 | 2 12 | 25.4 | 70 | 15 | 28 | 29 | 21.5 | 36 | 67 | |

1. La tolerancia del diámetro del mango de la herramienta debe estar dentro de h6.

Asegure el mandril en el accesorio antes de sujetar una herramienta de corte.

1. Tool shank diameter tolerance must be within h6.
2. Secure the chuck on the fixture before clamping a cutting tool.

Ejemplo para ordenar - Ordering Example

ST16L - PHC03 - 50

Interfaz y diámetro del husillo

Shank size

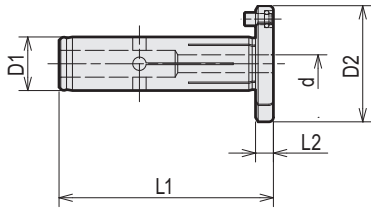
Diámetro Interior

I.D.

Longitud de proyección

Shank length

Boquilla con perno de retención - Collet with stopper pin

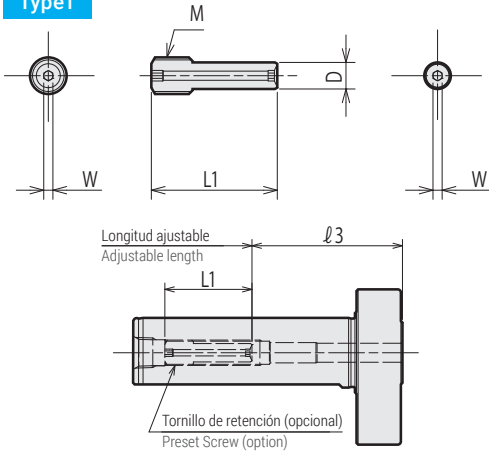


| Código Code | Modelo Model | D1 | D2 | L1 | L2 | d |
|-------------|------------------|----|----|----|----|--------------------------------|
| 3940 300512 | PHS12 - [d] - OH | 12 | 26 | 48 | 4 | 03, 04, 05, 06, 07, 08, 09, 10 |
| 3940 300612 | PHS12 - [d] - C | 12 | 26 | 48 | 4 | 03, 04, 05, 06, 07, 08, 09 |

La boquilla PHS12 con perno de retención solo se puede usar con PHC12.
The PHS12 collet with stopper pin can be used with PHC12 only.

| | | | | | |
|------------------------|--------------|--------------|--------------|--------------|----------------------------------|
| PHS12- [d1] -OH | 0.472 | 1.024 | 1.929 | 0.158 | 1/8, 3/16, 1/4, 5/16, 3/8 |
| PHS12- [d1] -C | 0.472 | 1.024 | 1.929 | 0.158 | 1/8, 3/16, 1/4, 5/16, 3/8 |

Tipo 1 Type 1



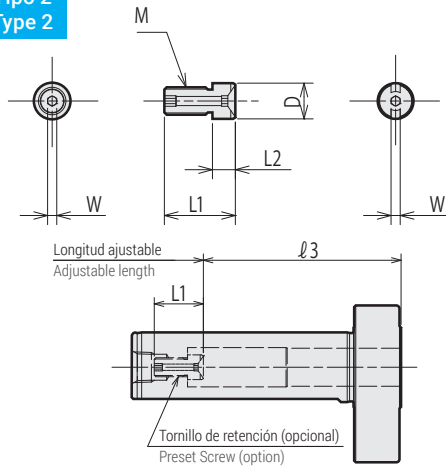
| Código Code | Modelo Model | Tipo Type | L1 | L2 | D | W | M | Tamaño Objetivo |
|---------------|---------------|-----------|------|----|-----|---|-----------|-------------------------|
| 0474 00004275 | PHCL-P04-27.5 | 1 | 27.5 | — | 3.8 | 2 | M8 P=1.25 | PHC03 PHC04 |
| 0474 00006275 | PHCL-P06-27.5 | 1 | 27.5 | — | 5.8 | 2 | | PHC06 |
| 0474 00008155 | PHCL-P08-15.5 | 2 | 15.5 | 5 | 7.8 | 2 | | PHC08 PHC10 PHC12 |
| 0474 00008205 | PHCL-P08-20.5 | 2 | 20.5 | 10 | 7.8 | 2 | | |
| 0474 00008255 | PHCL-P08-25.5 | 2 | 25.5 | 15 | 7.8 | 2 | | |
| 0474 00008305 | PHCL-P08-30.5 | 2 | 30.5 | 20 | 7.8 | 2 | | |
| 0474 00008355 | PHCL-P08-35.5 | 2 | 35.5 | 25 | 7.8 | 2 | | |
| 0474 00008405 | PHCL-P08-40.5 | 2 | 40.5 | 30 | 7.8 | 2 | | |

Ejemplo para ordenar - Ordering Example

PHCL - P04 - 27.5

Diámetro Internol.D. Longitud total (L1)
Total length (L1)

Tipo 2 Type 2



Cantidad ajustable con el tornillo de retención Adjustable amount with preset screw

| Modelo del tornillo de retención Preset screw model | Portabroca compatible Matched chuck | Tipo Type | L1 | Ø3 |
|---|-------------------------------------|-----------|------|---------|
| PHCL-P04-27.5 | ST16L - PHC03 - 50 | 1 | 27.5 | 17 ~ 30 |
| | - PHC04 - 50 | 1 | 27.5 | 19 ~ 30 |
| | ST19.05L - PHC03 - 60 | 1 | 27.5 | 17 ~ 40 |
| | - PHC04 - 60 | 1 | 27.5 | 19 ~ 40 |
| | ST20L - PHC03 - 70 | 1 | 27.5 | 17 ~ 50 |
| | - PHC04 - 70 | 1 | 27.5 | 19 ~ 50 |
| | ST22L - PHC03 - 70 | 1 | 27.5 | 17 ~ 50 |
| | - PHC04 - 70 | 1 | 27.5 | 19 ~ 50 |
| | ST25L - PHC03 - 70 | 1 | 27.5 | 17 ~ 50 |
| | - PHC04 - 70 | 1 | 27.5 | 19 ~ 50 |
| PHCL-P06-27.5 | ST16L - PHC06 - 50 | 1 | 27.5 | 27 ~ 30 |
| | ST19.05L - PHC06 - 60 | 1 | 27.5 | 27 ~ 40 |
| | ST20L - PHC06 - 70 | 1 | 27.5 | 27 ~ 50 |
| | ST22L - PHC06 - 70 | 1 | 27.5 | 27 ~ 50 |
| | ST25L - PHC06 - 70 | 1 | 27.5 | 27 ~ 50 |
| | ST25.4L - PHC06 - 70 | 1 | 27.5 | 27 ~ 50 |
| | ST25.4L - PHC06 - 70 | 1 | 27.5 | 27 ~ 50 |
| | ST25.4L - PHC06 - 70 | 1 | 27.5 | 27 ~ 50 |

| Modelo Model | Portabroca compatible Matched chuck | Tipo Type | Cantidad de ajuste = Ø3 | | | | | |
|----------------|-------------------------------------|-----------|-------------------------|------------|------------|------------|------------|------------|
| | | | [L1] =15.5 | [L1] =20.5 | [L1] =25.5 | [L1] =30.5 | [L1] =35.5 | [L1] =40.5 |
| PHCL-P08- [L1] | ST16L - PHC08 - 50 | 2 | 35 ~ 42 | 30 ~ 37 | 27 ~ 32 | — | — | — |
| | ST19.05L - PHC08 - 60 | 2 | 45 ~ 52 | 40 ~ 47 | 35 ~ 42 | 30 ~ 37 | 27 ~ 32 | — |
| | - PHC10 - 60 | 2 | 49 ~ 52 | 44 ~ 47 | 39 ~ 42 | 34 ~ 37 | — | — |
| | ST20L - PHC08 - 70 | 2 | 52 ~ 59 | 47 ~ 54 | 42 ~ 49 | 37 ~ 44 | 32 ~ 39 | 27 ~ 34 |
| | - PHC10 - 70 | 2 | 56 ~ 62 | 51 ~ 57 | 46 ~ 52 | 41 ~ 47 | 36 ~ 42 | 33 ~ 37 |
| | ST22L - PHC08 - 70 | 2 | 52 ~ 59 | 47 ~ 54 | 42 ~ 49 | 37 ~ 44 | 32 ~ 39 | 27 ~ 34 |
| | - PHC10 - 70 | 2 | 56 ~ 62 | 51 ~ 57 | 46 ~ 52 | 41 ~ 47 | 36 ~ 42 | 33 ~ 37 |
| | - PHC12 - 70 | 2 | 56 ~ 62 | 51 ~ 57 | 46 ~ 52 | 41 ~ 47 | 36 ~ 42 | — |
| | ST25L - PHC08 - 70 | 2 | 52 ~ 59 | 47 ~ 54 | 42 ~ 49 | 37 ~ 44 | 32 ~ 39 | 27 ~ 34 |
| | - PHC10 - 70 | 2 | 56 ~ 62 | 51 ~ 57 | 46 ~ 52 | 41 ~ 47 | 36 ~ 42 | 33 ~ 37 |
| | - PHC12 - 70 | 2 | 56 ~ 62 | 51 ~ 57 | 46 ~ 52 | 41 ~ 47 | 36 ~ 42 | — |
| | ST25.4L - PHC08 - 70 | 2 | 52 ~ 59 | 47 ~ 54 | 42 ~ 49 | 37 ~ 44 | 32 ~ 39 | 27 ~ 34 |
| | - PHC10 - 70 | 2 | 56 ~ 62 | 51 ~ 57 | 46 ~ 52 | 41 ~ 47 | 36 ~ 42 | 33 ~ 37 |
| | - PHC12 - 70 | 2 | 56 ~ 62 | 51 ~ 57 | 46 ~ 52 | 41 ~ 47 | 36 ~ 42 | — |