

PHC·SB

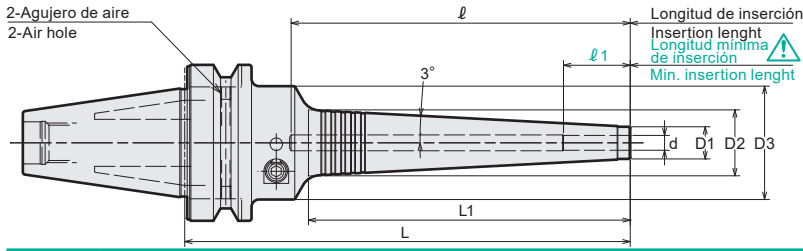
Portaherramienta Hidráulico Delgado Slim Hydro Chuck

NEW!



La opción perfecta para aplicaciones en espacios reducidos, como fresado, barrenado y rimado en máquinas de 5 ejes.

Perfect choice for tight space applications, such as endmill finishing, drilling and reaming on 5-axis machines.



⚠ Precaución Caution

Manténgase estrictamente dentro del mínimo de longitud en la inserción.
Strictly keep the min insertion length.



El tornillo de retención para zanco BT puede ser usado para AHO y zanco A.
El tornillo de retención con ducto de refrigerante para el antiguo zanco AHO puede ser usado removiendo el ducto de refrigerante.
Pull studs for BT shank can be used as is for AHO and A shank.
Pull stud with coolant pipe for old AHO shank can be used by removing the coolant pipe.

Código Code	Modelo Model	d	L	L1	D1	D2	D3	ℓ	ℓ1	Max. min ⁻¹	kg	Llave (Opción) Wrench (Option)	
3250 62103070	WBT-AHO30A -PHC03SB	-70	3	70	28	11	14.0	46	(93)	16	40,000	0.6	
3250 62103085		-85	3	85	37	11	14.9	46	(108)	16	40,000	0.6	
3250 62103130		-130	3	130	84	11	19.9	46	(153)	16	23,000	0.9	
3250 62104070	-PHC04SB	-70	4	70	28	11	14.0	46	(93)	19	40,000	0.6	
3250 62104085		-85	4	85	37	11	14.9	46	(108)	19	40,000	0.6	
3250 62104130		-130	4	130	84	11	19.9	46	(153)	19	22,000	0.9	
3250 62106090	-PHC06SB	-90	6	90	38	13	17.0	46	58	27	30,000	0.9	
3250 62106135		-135	6	135	84	13	21.9	46	92	27	21,000	1.0	
3250 62106150		-150	6	150	99	13	23.4	46	107	27	15,000	1.0	
3250 62106165		-165	6	165	114	13	25.0	46	122	27	12,000	1.1	
3250 62106180		-180	6	180	130	13	26.7	46	137	27	10,000	1.1	
3250 62107090	-PHC07SB	-90	7	90	38	14	18.0	46	58	27	28,000	0.9	
3250 62107135		-135	7	135	84	14	22.9	46	92	27	21,000	1.0	
3250 62107150		-150	7	150	99	14	24.4	46	107	27	15,000	1.0	
3250 62107165		-165	7	165	114	14	26.0	46	122	27	12,000	1.1	
3250 62107180		-180	7	180	130	14	27.7	46	137	27	10,000	1.1	
3250 62108090	-PHC08SB	-90	8	90	38	15	19.0	46	58	27	27,000	0.9	
3250 62108135		-135	8	135	84	15	23.9	46	92	27	20,000	1.0	
3250 62108150		-150	8	150	99	15	25.4	46	107	27	15,000	1.0	
3250 62108165		-165	8	165	114	15	27.0	46	122	27	12,000	1.1	
3250 62108180		-180	8	180	130	15	28.7	46	137	27	10,000	1.2	
3250 62109105	-PHC09SB	-105	9	105	53	16	21.6	46	73	33	27,000	0.9	L-4T
3250 62109135		-135	9	135	84	16	24.9	46	92	33	20,000	1.0	
3250 62109150		-150	9	150	99	16	26.4	46	107	33	15,000	1.1	
3250 62109165		-165	9	165	114	16	28.0	46	122	33	12,000	1.1	
3250 62109180		-180	9	180	130	16	29.7	46	137	33	10,000	1.2	
3250 62110105	-PHC10SB	-105	10	105	53	17	22.6	46	73	33	27,000	0.9	
3250 62110135		-135	10	135	84	17	25.9	46	92	33	20,000	1.0	
3250 62110150		-150	10	150	99	17	27.4	46	107	33	15,000	1.1	
3250 62110165		-165	10	165	114	17	29.0	46	122	33	12,000	1.1	
3250 62110180		-180	10	180	130	17	30.7	46	137	33	10,000	1.2	
3250 62111105	-PHC11SB	-105	11	105	53	18	23.6	46	73	36	26,000	0.9	
3250 62111135		-135	11	135	84	18	26.9	46	92	36	19,000	1.0	
3250 62111150		-150	11	150	99	18	28.4	46	107	36	15,000	1.1	
3250 62111165		-165	11	165	114	18	30.0	46	122	36	12,000	1.2	
3250 62111180		-180	11	180	130	18	31.7	46	137	36	10,000	1.2	
3250 62112105	-PHC12SB	-105	12	105	53	19	24.6	46	73	36	26,000	0.9	
3250 62112135		-135	12	135	84	19	27.9	46	92	36	19,000	1.0	
3250 62112150		-150	12	150	99	19	29.4	46	107	36	15,000	1.1	
3250 62112165		-165	12	165	114	19	31.0	46	122	36	12,000	1.2	
3250 62112180		-180	12	180	130	19	32.7	46	137	36	10,000	1.2	
3250 62303075	WBT-AHO40A -PHC03SB	-75	3	75	28	11	14.0	46	(110)	16	20,000	1.1	L-4T
3250 62303090		-90	3	90	37	11	14.9	46	(125)	16	20,000	1.1	
3250 62303135		-135	3	135	84	11	19.9	46	(170)	16	20,000	1.5	
3250 62304075	-PHC04SB	-75	4	75	28	11	14.0	46	(110)	19	20,000	1.1	
3250 62304090		-90	4	90	37	11	14.9	46	(125)	19	20,000	1.1	
3250 62304135		-135	4	135	84	11	19.9	46	(170)	19	20,000	1.5	
3250 62306090	-PHC06SB	-90	6	90	38	13	17.0	46	53	27	20,000	1.4	
3250 62306135		-135	6	135	84	13	21.9	46	92	27	20,000	1.5	
3250 62306150		-150	6	150	99	13	23.4	46	107	27	16,000	1.5	
3250 62306165		-165	6	165	114	13	25.0	46	122	27	12,000	1.6	
3250 62306180		-180	6	180	130	13	26.7	46	137	27	10,000	1.6	
3250 62307090	-PHC07SB	-90	7	90	38	14	18.0	46	53	27	20,000	1.4	
3250 62307135		-135	7	135	84	14	22.9	46	92	27	20,000	1.5	
3250 62307150		-150	7	150	99	14	24.4	46	107	27	16,000	1.5	
3250 62307165		-165	7	165	114	14	26.0	46	122	27	13,000	1.6	
3250 62307180		-180	7	180	130	14	27.7	46	137	27	10,000	1.6	

Código Code	Modelo Model	d	L	L1	D1	D2	D3	ℓ	ℓ1	Max. min ⁻¹	kg	Llave (Opción) Wrench (Option)
3250 62308090	WBT-AHO40A -PHC08SB -90	8	90	38	15	19.0	46	53	27	20,000	1.5	L-4T
3250 62308135	-135	8	135	84	15	23.9	46	92	27	20,000	1.5	
3250 62308150	-150	8	150	99	15	25.4	46	107	27	17,000	1.5	
3250 62308165	-165	8	165	114	15	27.0	46	122	27	12,000	1.6	
3250 62308180	-180	8	180	130	15	28.7	46	137	27	10,000	1.7	
3250 62309105	-PHC09SB -105	9	105	53	16	21.6	46	68	33	20,000	1.4	
3250 62309135	-135	9	135	84	16	24.9	46	92	33	20,000	1.5	
3250 62309150	-150	9	150	99	16	26.4	46	107	33	16,000	1.6	
3250 62309165	-165	9	165	114	16	28.0	46	122	33	12,000	1.6	
3250 62309180	-180	9	180	130	16	29.7	46	137	33	10,000	1.7	
3250 62310105	-PHC10SB -105	10	105	53	17	22.6	46	68	33	20,000	1.4	
3250 62310135	-135	10	135	84	17	25.9	46	92	33	20,000	1.5	
3250 62310150	-150	10	150	99	17	27.4	46	107	33	16,000	1.6	
3250 62310165	-165	10	165	114	17	29.0	46	122	33	12,000	1.6	
3250 62310180	-180	10	180	130	17	30.7	46	137	33	10,000	1.7	
3250 62311105	-PHC11SB -105	11	105	53	18	23.6	46	68	36	20,000	1.4	
3250 62311135	-135	11	135	84	18	26.9	46	92	36	20,000	1.5	
3250 62311150	-150	11	150	99	18	28.4	46	107	36	15,000	1.6	
3250 62311165	-165	11	165	114	18	30.0	46	122	36	12,000	1.7	
3250 62311180	-180	11	180	130	18	31.7	46	137	36	10,000	1.7	
3250 62312105	-PHC12SB -105	12	105	53	19	24.6	46	68	36	20,000	1.4	
3250 62312135	-135	12	135	84	19	27.9	46	92	36	20,000	1.5	
3250 62312150	-150	12	150	99	19	29.4	46	107	36	15,000	1.6	
3250 62312165	-165	12	165	114	19	31.0	46	122	36	12,000	1.7	
3250 62312180	-180	12	180	130	19	32.7	46	137	36	10,000	1.8	
3250 62316135	-PHC16SB -135	16	135	84	23	31.9	52.5	91	40	20,000	1.7	
3250 62316165	-165	16	165	114	23	35.0	52.5	120	40	13,000	1.9	
3250 62316180	-180	16	180	129	23	36.6	52.5	135	40	10,000	2.0	
3250 62320135	-PHC20SB -135	20	135	84	28	36.9	60	91	40	18,000	2.2	
3250 62320165	-165	20	165	114	28	40.0	60	120	40	14,000	2.3	
3250 62320180	-180	20	180	129	28	41.6	60	135	40	12,000	2.5	
3250 62325135	-PHC25SB -135	25	135	84	37	45.9	60	91	50	16,000	2.2	
3250 62325165	-165	25	165	114	37	49.0	60	120	50	15,000	2.5	
3250 62325180	-180	25	180	129	37	50.6	60	135	50	11,000	2.6	
3250 62503150	WBT-AHO50A -PHC03SB -150	3	150	84	11	19.9	46	(130)	16			L-5T
3250 62506150	-195	3	195	84	11	19.9	46	(175)	16			
3250 62506165	-150	4	150	84	11	19.9	46	(130)	19			
3250 62506180	-195	4	195	84	11	19.9	46	(175)	19			
3250 62506105	-PHC06SB -105	6	105	38	13	17.0	46	53	27	15,000	4.1	
3250 62506150	-150	6	150	84	13	21.9	46	92	27	15,000	4.1	
3250 62506165	-165	6	165	99	13	23.4	46	107	27	15,000	4.1	
3250 62506180	-180	6	180	114	13	25.0	46	122	27	12,000	4.2	
3250 62506195	-195	6	195	130	13	26.7	46	137	27	10,000	4.2	
3250 62507105	-PHC07SB -105	7	105	38	14	18.0	46	53	27	15,000	4.1	
3250 62507150	-150	7	150	84	14	22.9	46	92	27	15,000	4.1	
3250 62507165	-165	7	165	99	14	24.4	46	107	27	15,000	4.1	
3250 62507180	-180	7	180	114	14	26.0	46	122	27	12,000	4.2	
3250 62507195	-195	7	195	130	14	27.7	46	137	27	10,000	4.2	
3250 62508105	-PHC08SB -105	8	105	38	15	19.0	46	53	27	15,000	4.1	
3250 62508150	-150	8	150	84	15	23.9	46	92	27	15,000	4.1	
3250 62508165	-165	8	165	99	15	25.4	46	107	27	15,000	4.1	
3250 62508180	-180	8	180	114	15	27.0	46	122	27	12,000	4.2	
3250 62508195	-195	8	195	130	15	28.7	46	137	27	10,000	4.2	
3250 62509150	-PHC09SB -150	9	150	84	16	24.9	46	92	33	15,000	4.1	
3250 62509165	-165	9	165	99	16	26.4	46	107	33	15,000	4.1	
3250 62509180	-180	9	180	114	16	28.0	46	122	33	12,000	4.2	
3250 62509195	-195	9	195	130	16	29.7	46	137	33	10,000	4.3	
3250 62510150	-PHC10SB -150	10	150	84	17	25.9	46	92	33	15,000	4.1	
3250 62510165	-165	10	165	99	17	27.4	46	107	33	15,000	4.2	
3250 62510180	-180	10	180	114	17	29.0	46	122	33	12,000	4.2	
3250 62510195	-195	10	195	130	17	30.7	46	137	33	10,000	4.3	
3250 62511150	-PHC11SB -150	11	150	84	18	26.9	46	92	36	15,000	4.1	
3250 62511165	-165	11	165	99	18	28.4	46	107	36	15,000	4.2	
3250 62511180	-180	11	180	114	18	30.0	46	122	36	12,000	4.2	
3250 62511195	-195	11	195	130	18	31.7	46	137	36	10,000	4.3	
3250 62512150	-PHC12SB -150	12	150	84	19	27.9	46	92	36	15,000	4.1	
3250 62512165	-165	12	165	99	19	29.4	46	107	36	15,000	4.2	
3250 62512180	-180	12	180	114	19	31.0	46	122	36	12,000	4.3	
3250 62512195	-195	12	195	130	19	32.7	46	137	36	10,000	4.3	
3250 62516150	-PHC16SB -150	16	150	84	23	31.9	52.5	91	40	15,000	4.2	
3250 62516180	-180	16	180	114	23	35.0	52.5	120	40	12,000	4.4	
3250 62516195	-195	16	195	129	23	36.6	52.5	135	40	10,000	4.6	
3250 62520150	-PHC20SB -150	20	150	84	28	36.9	60	91	40	15,000	4.7	
3250 62520180	-180	20	180	114	28	40.0	60	120	40	14,000	4.9	
3250 62520195	-195	20	195	129	28	41.6	60	135	40	12,000	5.0	
3250 62525150	-PHC25SB -150	25	150	84	37	45.9	60	91	50	15,000	4.8	
3250 62525180	-180	25	180	114	37	49.0	60	120	50	14,000	5.0	
3250 62525195	-195	25	195	129	37	50.6	60	135	50	12,000	5.2	

BT
AHO-A
HSK-A
HSK-F
HSK-F
C
UTS
ST

Portaherramienta Hidráulica
Slim Hydro Chuck
PHC-SB

"Blaster" Portaherramienta Hidráulica Delgado Slim Hydro Chuck Blaster PHC-SB-C

"Blaster" Portaherramienta Hidráulica Delgado Slim Hydro Chuck Blaster PHC-SB-NC


Portaherramienta de Poder Hidráulico Power Hydro Chuck PHC-A

Portaherramienta Hidráulica Omega Hydro Chuck Omega PHC-H

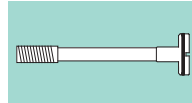
Accesorios
Accesorios

- La tolerancia de diámetro del zanco de la herramienta debe estar dentro de h6.
 - El tornillo Allen es necesario para taponar el orificio de aire para habilitar la alimentación de refrigeración por centro de la boquilla.
 - La velocidad permitida se ve afectada por la rigidez del husillo de la máquina y el balance de la herramienta de corte. Incrementar gradualmente de una velocidad lenta, hasta llegar a la velocidad adecuada.
 - ℓ indica la dimensión al usarlo con un tornillo de preajuste.
() la medida se encuentra al final del perno de retención
- Tool shank diameter tolerance must be within h6.
 - Hex-head screws are necessary to plug air hole for center through coolant feed.
 - Permissible speed is greatly affected by the stiffness of the machine spindle and the balance of the cutting tool. Gradually increase from a low speed, and use at the proper speed.
 - ℓ indicates dimension when using without a preset screw. () dimension is to end of retention stud.

Llave Allen
Hex. wrench
P. 23



Tornillo de preajuste
Preset Screw
P. 38



Ejemplo para ordenar Ordering Example

WBT-AHO50A - PHC12SB - 150

AHO Tamaño de zanco
AHO Shank size
Diámetro Interno (d)
I.D.
Longitud de proyección (L)
Projection length